

Corporate Profile

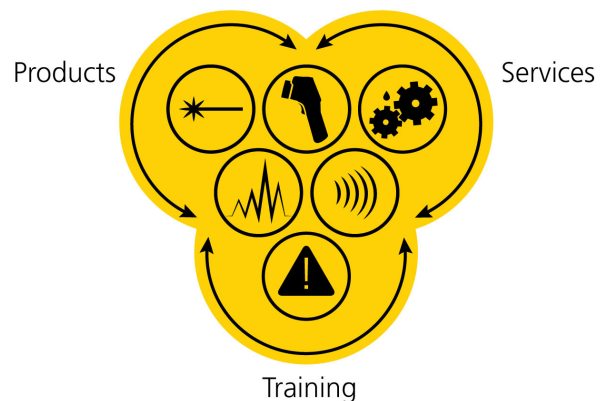
Specialists in Machine Health and Reliability Engineering

Yellotec is a solution oriented company focused on machine health and reliability through the application of the following technologies:

- Vibration Analysis
- Oil Analysis
- Infrared Thermography
- Laser Alignment & Balancing
- Structural and Air borne Ultrasound
- Failure Analysis
- Fluid Management
- Conveyor Monitoring
- Electric Motor Testing



These technologies form Yellotec's core business; within which the company is divided in three main divisions:



By carefully choosing and aligning our company with leading global companies such as FLIR, Prüftechnik, UE and PCB Piezotronics, we are able to contribute and offer unmatched value-based solutions within the Sub- Sahara Africa region. Yellotec has a relentless pursuit of distinguished performance that results in repeat business and customer referrals.

Reliability through Condition Based Monitoring

Yellow Technical Services (t/a Yellotec) was founded in 2004 by Toni de Sousa, with its focus on oil analysis for mobile equipment in the earth moving industry, generally known as yellow plant, hence the name Yellotec.

Toni founded the original Predict Engineering Services, later known as ABB Predict, (now Wearcheck) and was responsible for assembling the key elements that led to the growth and success earned by Predict.

In time, Yellotec returned to its roots and again offered all of the services and products employed by companies pursuing condition based maintenance strategies, including vibration analysis, infrared thermography and ultrasound.

Specialists in the field of Condition Based Monitoring

Yellotec successfully delivers condition based maintenance services to the following industries:

- Power Generation, Transmission & Distribution
- Minerals & Mining; open pit, underground and processing plants
- Paper & Pulp
- Iron & Steel
- Petrochemical
- Marine LNG
- Companies include Eskom, BHP Billiton, Anglo American, Xstrata, Sappi, Mondi, Illovo, Tongaat Hulett, Hualamin, Mittal, Columbus, Sasol, Shell.

Yellotec has many years of experience in surface and subsurface mining as well as industrial and petrochemical plants. We have proven and real application know-how, as well as unsurpassed experience in performing CBM on stationary industrial and mining equipment such as conveyors, crushers, mills, gearboxes, fans, etc. as well as on mobile mining equipment i.e. BWE, draglines, shovels, drills, haulers etc.

Our innovative machine monitoring systems for all machine types and sizes, serve our customers in optimizing system availability, enabling a high level of productivity. We keep in close touch with our customers by offering not only precision instruments but a range of high-end maintenance services, including on-site vibration analysis, oil analysis, infrared thermography, balancing, alignment and a number of other NDT technologies.



Products

Yellotec employs a large sales staff complement, all of which are fully trained specialists in the operation, use and application of the instruments and software on offer.

The products offered by Yellotec include, but are not limited to those listed. Please do not hesitate to contact us in this regard or to enquire about other possible products in this market place. Our website contains recent and up to date information with regard to products on offer.

Yellotec supports all equipment on offer locally through our first line equipment support and calibration workshop, and will facilitate each and every warranty claim or repair with as much passion and attention as we have given the original sale.

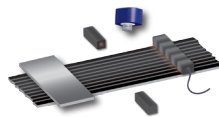


FLIR Infrared / Thermal Cameras

Yellotec is the only FLIR Agent in the country authorised to sell the full complement of FLIR products on offer through FLIR Commercial Vision Systems and FLIR Industrial and Science, and includes all Thermography and Security (imaging) products.

Yellotec is the sole authorised local agent for FLIR ATS – Advanced Thermal Solutions, which includes the GasfindIR and all SC type Research and Development cameras / systems.

All Yellotec Sales personnel are qualified to either Level 1 or 2 IRT and Yellotec employs two Level 3 qualified Thermographers.



Beltwatch

Yellotec offers a cost-effective steel cord belt inspection system, BeltWatch, originally designed and developed by Westplex. This system will identify and monitor steel cord defects, surface damage, splice deterioration and tracking deviations in real-time, thus preventing serious problems.



CorDEX

CorDEX Instruments is a manufacturer of high quality hand-held inspection & NDT devices for use within hazardous (potentially explosive) environments, working to the highest safety certification including ATEX, IECEx and CSA.



Prüftechnik Vibration

Yellotec is the sole representative for Prüftechnik's Vibration and Alignment equipment in South and Southern Africa.

Yellotec employs Level 3 and Level 4 qualified Vibration Analysts as sales people in the Vibration field, and offers the full range of hand-held and fixed installed systems on offer from Prüftechnik.



PdMA

PdMA® Corporation is a manufacturer of electric motor testing instruments. These testers are portable, and has the ability to analyse and evaluate critical equipment, offline and online, with only one machine. Designed to monitor and trend the condition of AC induction, synchronous, wound rotor, and DC motors and their circuits.



Spectro Scientific

Spectro Scientific develops a broad array of fluid analysis instruments for evaluating machine and lubricant condition in the field, in the lab and in highly mobile, handheld applications. Their product offering includes spectrometers, lubricant degradation and contamination analyzers, and particle analysis instruments.



Prüftechnik Alignment

Prüftechnik is the unrivalled Rolls Royce brand in machine alignment equipment, with no other OEM product remotely approaching their quality, capability, ease of use and precision standards. Our sales people are specialists in the use of these magnificent instruments.



UE Systems

UE Systems are the inventors of structural and airborne Ultrasound measurement and recording equipment. As such UE equipment indisputably in their design, quality and diversity of application and model range. All sales personnel are Level 1 Ultrasound qualified.



PCB Piezotronics / IMI Sensors

Yellotec represents PCB IMI Sensors, designer and manufacturer of high quality, low cost industrial accelerometers, transmitters, pressure sensors, vibration switches and electronics for a wide array of industrial applications.



FLIR Motion Control Systems

Yellotec is the only representative of this extremely high precision, pan and tilt systems used for automated movement of specialist cameras.

Services

Yellotec offers a wide range of services, including:

- Field Services
- On-Site Services
- Laboratory Services
- Consulting Services

Our commitment to use our quality system as an integral part of our daily routine and activities, and through its usage, form the infrastructure that assures customers of the highest level of performance and reliability.



Vibration Analysis

Yellotec is capable of providing its vibration analysis services in any of the following supplier formats; Emerson CSI, Rockwell Entek, SKF, or Prüftechnik.

Yellotec offers the following routine and diagnostic capabilities;

- Amplitude and envelope spectrum
- Time wave form
- Order analysis
- Spectrum analysis
- Coast down measurement
- Phase measurement (also cross channels)
- Orbit Analysis



Oil Analysis

Yellotec owns and operates a comprehensive commercial used oil analysis laboratory in Woodmead.

The laboratory offers the following comprehensive testing:

- Used oil
- Diesel fuel
- Greases
- Coolants



Laser Alignment

Using PRÜFTECHNIK laser alignment systems, Yellotec engineers provide comprehensive shaft alignment measurement service for your rotating machines that is unrivalled worldwide. Whether you have complex machine trains, vertical machines, or any number of simple pump and motor sets to align, in standard or intrinsically safe environments, Yellotec can provide a service for your company.



Infrared Thermography

Yellotec offers a comprehensive infrared thermographic service using FLIR's most advanced cameras. Reporting is conducted using either Exception or Route based database software.



Electric Motor Testing

Yellotec utilises the latest electric motor testing technology to analyse AC induction, Synchronous, Wound Rotor, and DC motor and their circuits utilising PDMA's proven six Fault Zone approach.



Balancing

Yellotec specialists are able to detect and quickly eliminate imbalance even under difficult conditions. Balancing results are automatically compared to the evaluation criteria for the balance condition of rotating, rigid bodies as stipulated in the DIN ISO 1940 standard.



Turbine Alignment

Yellotec offers a certified service to perform laser measurements to turbines on behalf of leading turbine manufacturers. Improved efficiency, minimizing outages, and reducing the overhaul duration form part of the benefits of laser alignment.

The service includes alignment of;

- Turbine centreline tops on and tops off
- Diaphragms Bearing
- Pedestals Glands
- Frames Couplings Rotors
- Shaft straightness & flatness
- Shaft plumbness on vertical turbines
- Inner and outer casing
- Continuous laser monitoring & thermal growth

Training

Specialised expensive equipment does not generate value without trained operators or technicians. Yellotec offers a full complement training courses in Condition Monitoring disciplines as well product specific and Reliability Engineering specific courses.

Please do not hesitate to contact us for a full schedule.

Infrared Thermography
IRT Basic, Level 1, Level 2 and Level 3

Vibration Analysis
Mobius Level 1, 2 and 3

Field Lubricant Analysis
Noria Level 1, 2 and 3

Machinery Lubrication
Noria Level 1 and 2

Oil Analysis Series
Level 1, 2 and 3

Ultrasound
Level 1 and 2

Shaft Alignment
Level 1

Gearbox Maintenance

Failure Analysis

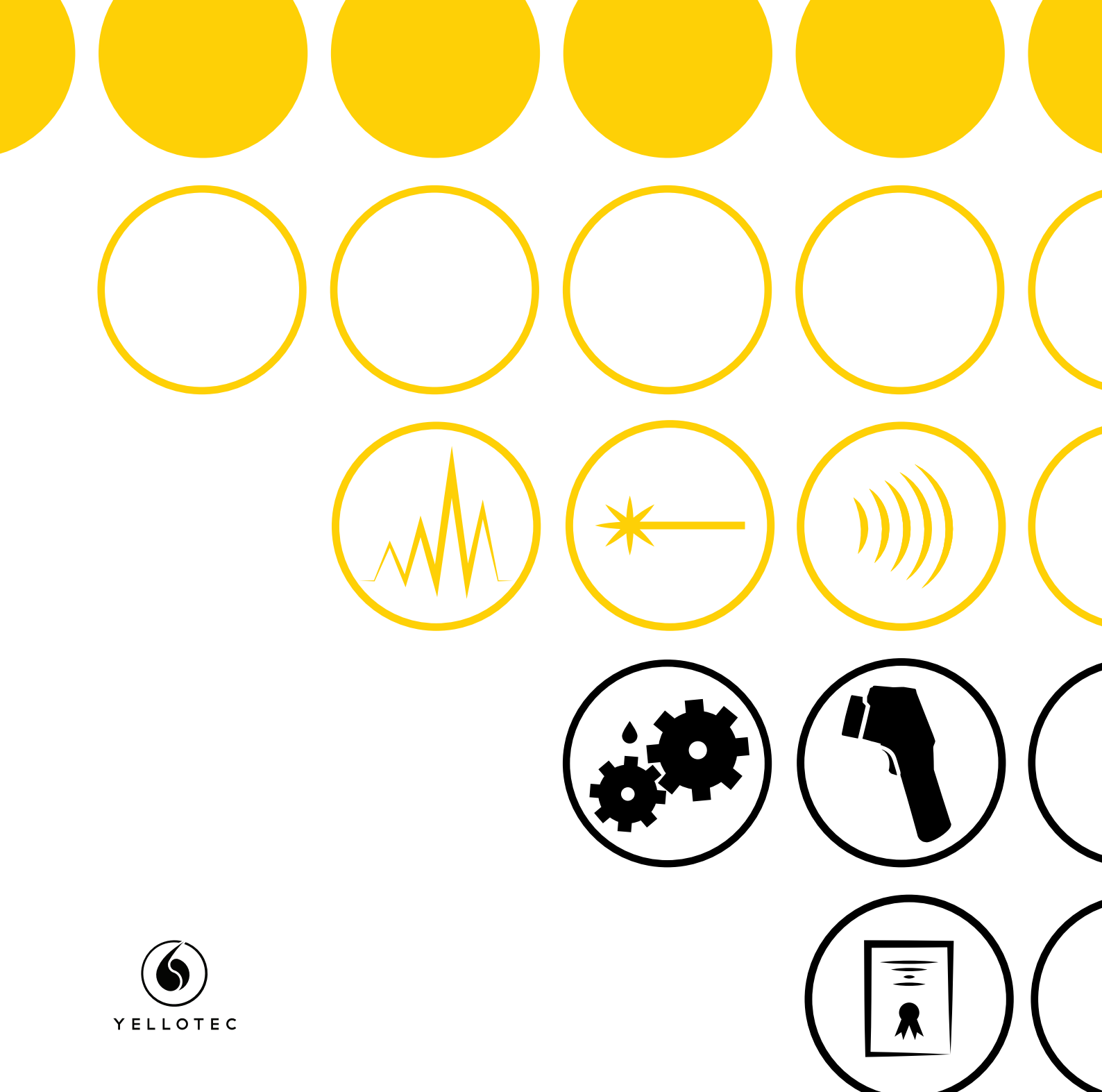
Condition Monitoring for Engineers

Plant Management – Dr. Mike Vorster

Courses offered are either presented under license from International Certification Bodies or are in accordance with ISO requirements.



All of our public training courses can also be conducted as in-house private courses. If you have 10 or more attendees, consider the benefits of an in-house session conducted in the privacy and convenience of your facilities, or a meeting site of your choice. Please contact us so that we can understand your requirements, explore the benefits and make it happen.



YELLOTEC

Co. Name: Yellow Technical Services (Pty) Ltd
Trading as: Yellotec

w: www.yellotec.com
t: +27 (0) 11 656 9111
f: +27 (0) 11 656 9112
e: info@yellotec.com

PO Box 31448
Kyalami
1685

33 Taljaard Road
Bartlett
Boksburg
1459

Reg. No: 2013/231556/07
VAT No.: 4020210219

Yellotec is a products, service and training provider in the following specialist fields:

1. Complete solutions for the implementation and management of Condition Based Maintenance.
2. Remote Diagnosis of Vibration Analysis.
3. Full on-site CBM services, ranging from single individuals to complete department.
4. Oil Analysis Laboratory Services.
5. Vibration Analysis Services.
6. Thermographic Analysis Services.
7. Laser Alignment & Balancing Services.
8. Training in all specialist areas of Condition Based Maintenance
9. Direct agents for FLIR Systems (Sweden) and Prüftechnik(Germany).